

www.indiratrade.com



MONDAY

CURRENCY COMMODITIES

WEEKLY REPORT
14 JAN 2019 TO 18 JAN 2019

EDGE



INDIRA SECURITIES PVT. LTD.



WEEKLY INDICES CHANGES

INDEX	CLOSE	PREV. CLOSE	Change (%)
SENSEX	36009.84	35695.1	0.88%
NIFTY	10795	10727.3	0.63%
DOW	23995.9	23433.2	2.40%
NASDAQ	6971.48	6738.86	3.45%
FTSE	6918.18	6837.42	1.18%
NIKKEI	20359.7	20077.5	1.41%
DAX	10887.5	10767.7	1.11%
CAC	4781.34	4737.12	0.93%

SS

Market Round Up:

- **Forex - Euro Heads for Weekly Gains as U.S. Dollar Weakens:** - The euro was on track for its biggest weekly rise in four months on Friday as the U.S. dollar weakened on signs that the Federal Reserve could slow down the pace of interest rate hikes.
- **Dollar jumps despite dovish inflation report, Treasuries gain.**
- **More U.S.-China trade talks will take place at end of January.**
- **Stocks Fall Led by Energy as Oil Slides Below \$52:** Markets Wrap: - U.S. stocks fell Friday as energy shares tumbled with oil falling below \$52 a barrel and political turmoil continuing as the government shutdown grows more contentious by the day. Treasuries rose with the dollar, which is on track for its fourth week of declines.
- **The dollar rose as investors appeared to be trimming positions heading into the weekend.** It's been pressured, and bonds have been boosted, by the Federal Reserve's message of patience on further interest-rate hikes. That case was bolstered by U.S. price data showing inflation slowing in line with expectations. European debt tracked Treasuries higher. The pound advanced even as Prime Minister Theresa May's office countered reports that Brexit may be delayed.

RBI REFERENCE RATE

INDEX	CLOSE	PREV. CLOSE
USDINR	70.4737	69.8653
EURINR	81.2083	79.5659
JPYINR	65.0300	64.6000
GBPINR	89.9155	88.2599

FII FIGURES

DATE	FII FIGURES IN CRORE
07/01	736
08/01	-554
09/01	276
10/01	-345
11/01	-687
NET	-573.24

DII FIGURES

DATE	DII FIGURES IN CRORE
07/01	-142
08/01	698
09/01	440
10/01	11
11/01	123
NET	1130.02



DOLLAR INDEX CHART



1. **RSI:** 62.20
2. **ADX:** Indicating Sideways signal
3. **Stochastic Oscillator:** indicating Sideways signal
4. **ATR:** 1.19
5. **Moving averages:** Pair is trading above 50 and 100 Day simple moving averages..

USDINR TECHNICAL CHART (INDIAN RUPEE)



- 1) **RSI:** 79.39
- 2) **ADX:** Indicating positive signal
- 3) **Stochastic Oscillator:** indicating positive signal
- 4) **ATR:** 0.8760
- 5) **Moving averages :** Pair is trading above 50 and 100 Day simple moving averages..



DOMESTIC CURRENCY

Domestic	S2	S1	PIVOT	R1	R2
USDINR	68.93	69.4	70.05	70.52	71.17
EURINR	79.21	79.54	80.14	80.47	81.07
GBPINR	87.68	88.16	88.87	89.36	90.07
JPYINR	61.95	63.38	64.83	66.26	67.72

GLOBAL CURRENCY

Global	S2	S1	PIVOT	R1	R2
DOLLAR INDEX	95.19	95.69	96.32	96.82	97.45
EURUSD	1.13	1.13	1.14	1.15	1.16
GBPUSD	1.24	1.25	1.27	1.28	1.3
USDJPY	104.54	106.35	108.52	110.33	112.5

CURRENCY PERFORMANCE

CURRENCY	CLOSE PRICE	DAY	WEEK	MONTHLY	YEARLY
EURO	1.14678	0.02%	-0.05%	1.07%	-6.47%
POUND	1.28471	0.09%	0.52%	1.74%	-6.85%
AUSTRALIAN DOLLAR	0.71843	-0.40%	0.54%	0.19%	-9.76%
NEWZEALAND DOLLAR	0.68085	-0.31%	0.85%	0.14%	-6.72%
YEN	108.09	-0.43%	-0.50%	-4.13%	-2.14%
YUAN	6.75719	-0.04%	-1.26%	-2.05%	5.12%
SWISS FRANC	0.98332	-0.05%	0.39%	-0.95%	2.12%
CANADIAN DOLLAR	1.32804	0.11%	-0.12%	-0.91%	6.86%
MEXICAN PESO	19.1707	0.21%	-0.95%	-4.48%	1.72%
INDIAN RUPEE	70.365	-0.06%	1.19%	-2.04%	10.79%
BRAZILIAN REAL	3.7104	0.81%	-2.09%	-5.29%	15.72%
RUSSIAN RUBBLE	66.9025	0.08%	0.38%	0.31%	18.80%
DOLLAR INDEX	95.59	-0.09%	-0.05%	-1.52%	5.11%
KORREAN WON	1121.27	0.21%	0.49%	-0.23%	5.54%
SOUTH AFRICAN RAND	13.8675	0.42%	0.03%	-3.58%	12.83%
SINGAPORE DOLLAR	1.35366	0.07%	-0.18%	-1.38%	2.49%
HONGKONG DOLLAR	7.84231	0.04%	0.10%	0.39%	0.25%



FUNDAMENTAL OF COMMODITIES

MAJOR COMMODITIES

MCX ENERGY WEEKLY

Commodity	S2	S1	Pivot	R1	R2
Crude oil	2975.3	3161.7	3300.3	3486.7	3625.3
Natural Gas	186.2	198.2	214.3	226.3	242.4

MCX BASE METAL WEEKLY

Commodity	S2	S1	Pivot	R1	R2
Copper	386.1	397.9	409.1	420.9	432.1
Zinc	162.6	167.1	171.7	176.1	180.7
Lead	130.6	133.6	138.3	141.3	145.9
Nickel	720.3	746.7	761.6	788.0	802.9

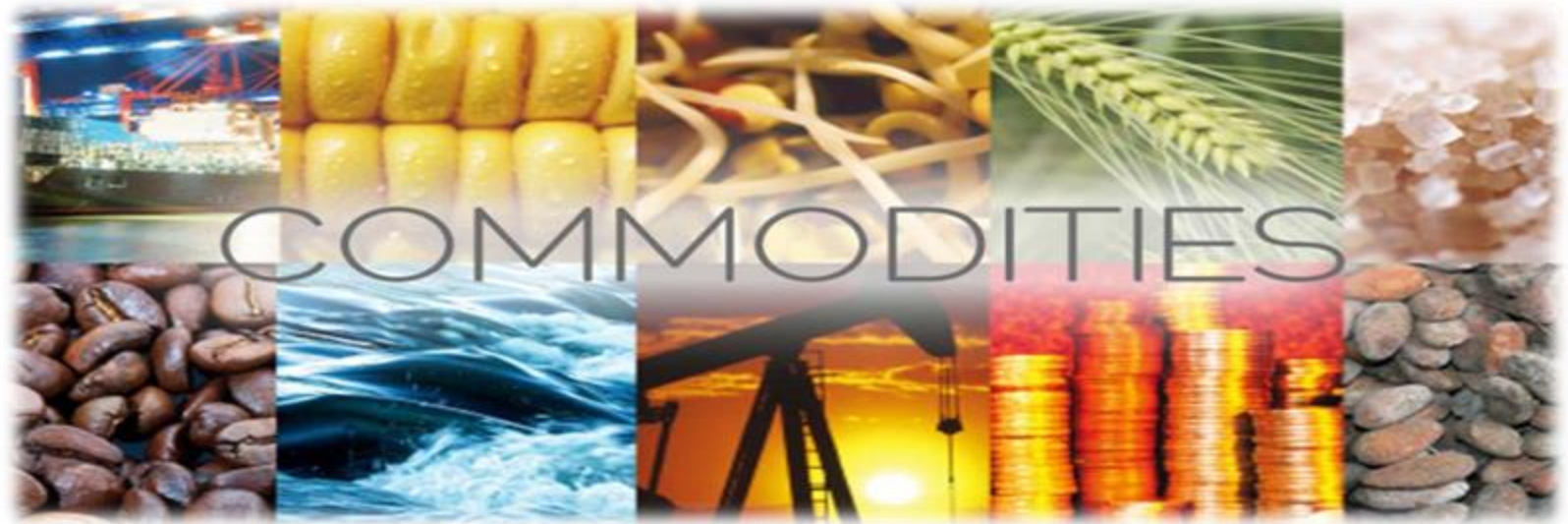
PRECIOUS METAL WEEKLY

Commodity	S2	S1	Pivot	R1	R2
Gold	30926.7	31191.3	31564.7	31829.3	32202.7
Silver	38011.0	38592.0	39131.0	39712.0	40251.0

International Commodity	S2	S1	Pivot	R1	R2	CMP	PREV CLOSE
Gold COMEX	\$1,266.00	\$1,276.00	\$1,288.00	\$1,298.00	\$1,310.00	\$1,292.00	\$1,286.00
SILVER COMEX	15.14	15.47	15.71	16.04	16.28	15.74	15.79
NYMEX CRUDE	42.31	45.13	47.18	50	52.05	52.36	47.96
BRENT CRUDE	50.3	53.85	56.08	59.63	61.86	61.36	57.41

Updates:

- **Gold Prices Heads for Weekly Gains on Less Hawkish Fed, Shutdown Worries:** - Gold prices pressed higher on Friday, on track for its fourth week of gains, as a less hawkish Federal Reserve and concern over the partial U.S. government shutdown supported demand for the precious metal.
- **Oil Prices Reverse from Earlier Gains:** - Crude prices were lower on Friday despite turning bullish earlier this week as Iran struggles to find new buyers amid U.S. sanctions. Iranian crude exports are expected to fall for a third month in January as the country fails to find buyers despite the U.S. giving waivers to its customers amid sanctions imposed by the White House in November, Reuters reported.
- **Natural Gas Price Adds to Gains Following Inventory Report:** - The U.S. Energy Information Administration (EIA) reported Thursday morning that U.S. natural gas stockpiles decreased by 91 billion cubic feet for the week ending January 4. Analysts polled by Reuters were expecting a storage withdrawal in a range of 50 billion to 115 billion cubic feet.

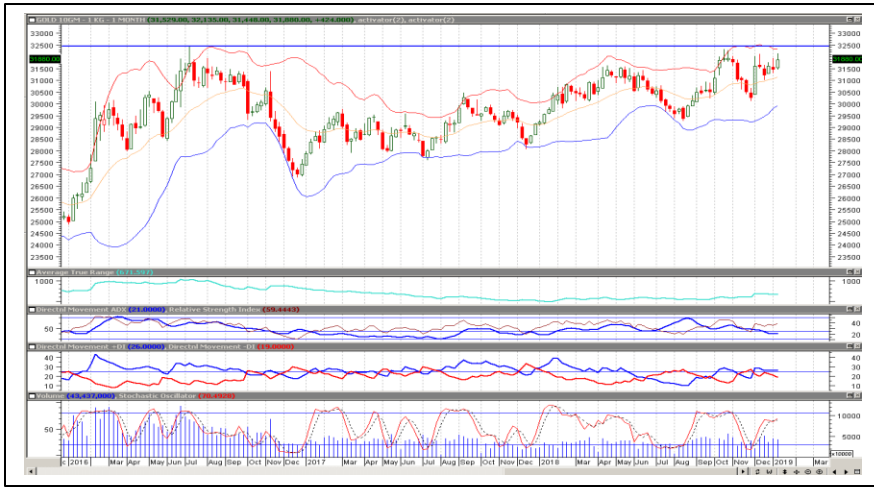


MAJOR COMMODITIES

Commodity Major	Price	Day	Weekly	Monthly	Yearly
Crude Oil	50.9275	-1.46%	4.77%	1.92%	-21.50%
Brent	59.7034	-1.10%	4.04%	0.06%	-15.11%
Natural gas	3.2944	4.27%	11.84%	-6.67%	5.18%
Gold	1289.38	0.22%	-0.01%	3.43%	-3.82%
Silver	15.5843	0.15%	-0.41%	6.27%	-10.21%
Platinum	810.5	-1.13%	-1.46%	1.50%	-18.42%
Palladium	1318	-0.30%	1.33%	4.47%	17.05%
Copper	2.6484	-0.62%	0.28%	-3.80%	-16.78%
Lead	1988.75	1.23%	2.62%	1.09%	-23.01%
Aluminum	1851.5	-2.19%	%	-4.51%	-16.86%
Tin	19300	-0.39%	%	0.92%	-4.93%
Zinc	2495	0.85%	%	-3.67%	-27.11%



MCX GOLD CHART



Commodity	S2	S1	Pivot	R1	R2
Gold	30926.7	31191.3	31564.7	31829.3	32202.7

GOLD TECHNICAL INDICATOR	
RSI(14)	BUY
STOCH(9,6)	BUY
STOCHRSI(14)	BUY
MACD(12,26)	BUY
ADX(14)	SELL
Williams %R	BUY
CCI(14)	BUY
Highs/Lows(14)	BUY
Ultimate Oscillator	SELL
ROC	BUY
BUY	7
SELL	2
NEUTRAL	0
SUMMARY	STRONG BULLISH

GOLD INTERNATIONAL CHART



Commodity	S2	S1	Pivot	R1	R2
Gold	\$1,266.0	\$1,276.0	\$1,288.0	\$1,298.0	\$1,310.0

GOLD INTERNATIONAL TECHNICAL INDICATOR	
RSI(14)	BUY
STOCH(9,6)	BUY
STOCHRSI(14)	BUY
MACD(12,26)	BUY
ADX(14)	BUY
Williams %R	BUY
CCI(14)	BUY
Highs/Lows(14)	BUY
Ultimate Oscillator	BUY
ROC	BUY
BUY	9
SELL	0
NEUTRAL	0
SUMMARY	STRONG BULLISH



MCX SILVER CHART



Commodity	S2	S1	Pivot	R1	R2
Silver	38011.0	38592.0	39131.0	39712.0	40251.0

SILVER TECHNICAL INDICATOR

RSI(14)	BUY
STOCH(9,6)	BUY
STOCHRSI(14)	BUY
MACD(12,26)	BUY
ADX(14)	SELL
Williams %R	BUY
CCI(14)	BUY
Highs/Lows(14)	BUY
Ultimate Oscillator	BUY
ROC	BUY

BUY	8
SELL	1
NEUTRAL	0
SUMMARY	STRONG BULLISH

SILVER INTERNATIONAL CHART



Commodity	S2	S1	Pivot	R1	R2
Silver	\$15.1	\$15.5	\$15.7	\$16.0	\$16.3

SILVER INTERNATIONAL TECHNICAL INDICATOR

RSI(14)	BUY
STOCH(9,6)	BUY
STOCHRSI(14)	SELL
MACD(12,26)	BUY
ADX(14)	SELL
Williams %R	BUY
CCI(14)	BUY
Highs/Lows(14)	BUY
Ultimate Oscillator	BUY
ROC	BUY

BUY	7
SELL	2
NEUTRAL	0
SUMMARY	STRONG BULLISH



MCX COPPER CHART



Commodity	S2	S1	Pivot	R1	R2
Copper	386.1	397.9	409.1	420.9	432.1

COPPER TECHNICAL INDICATOR

RSI(14)	SELL
STOCH(9,6)	BUY
STOCHRSI(14)	SELL
MACD(12,26)	SELL
ADX(14)	SELL
Williams %R	NETURAL
CCI(14)	SELL
Highs/Lows(14)	BUY
Ultimate Oscillator	SELL
ROC	SELL
BUY	2
SELL	7
NEUTRAL	1
SUMMARY	STRONG BEARISH

COPPER INTERNATIONAL CHART



Commodity	S2	S1	Pivot	R1	R2
Copper	\$2.5	\$2.6	\$2.6	\$2.7	\$2.7

COPPER INTERNATIONAL TECHNICAL INDICATOR

RSI(14)	SELL
STOCH(9,6)	BUY
STOCHRSI(14)	BUY
MACD(12,26)	SELL
ADX(14)	SELL
Williams %R	NETURAL
CCI(14)	SELL
Highs/Lows(14)	BUY
Ultimate Oscillator	BUY
ROC	SELL
BUY	4
SELL	5
NEUTRAL	1
SUMMARY	MILD BEARISH



MCX CRUDE CHART



Commodity	S2	S1	Pivot	R1	R2
Crude oil	2975.3	3161.7	3300.3	3486.7	3625.3

BRENT CRUDE OIL TECHNICAL INDICATOR	
RSI(14)	SELL
STOCH(9,6)	BUY
STOCHRSI(14)	BUY
MACD(12,26)	SELL
ADX(14)	BUY
Williams %R	NETURAL
CCI(14)	SELL
Highs/Lows(14)	BUY
Ultimate Oscillator	SELL
ROC	SELL
BUY	4
SELL	5
NEUTRAL	1
SUMMARY	NETURAL

NYMEX CRUDE CHART



Commodity	S2	S1	Pivot	R1	R2
Crude oil	\$42.3	\$45.1	\$47.2	\$50.0	\$52.1

CRUDE.OILNYM TECHNICAL INDICATOR	
RSI(14)	SELL
STOCH(9,6)	BUY
STOCHRSI(14)	BUY
MACD(12,26)	SELL
ADX(14)	SELL
Williams %R	NETURAL
CCI(14)	SELL
Highs/Lows(14)	BUY
Ultimate Oscillator	SELL
ROC	SELL
BUY	3
SELL	6
NEUTRAL	1
SUMMARY	MILD BEARISH



MCX NATURAL GAS



Commodity	S2	S1	Pivot	R1	R2
Natural Gas	186.2	198.2	214.3	226.3	242.4

NATURALGAS TECHNICAL INDICATOR

RSI(14)	SELL
STOCH(9,6)	SELL
STOCHRSI(14)	BUY
MACD(12,26)	SELL
ADX(14)	BUY
Williams %R	SELL
CCI(14)	SELL
Highs/Lows(14)	BUY
Ultimate Oscillator	SELL
ROC	SELL
BUY	3
SELL	7
NEUTRAL	0
SUMMARY	STRONG BEARISH

NATURAL GAS INTERNATIONAL



Commodity	S2	S1	Pivot	R1	R2
Natural Gas	\$2.8	\$2.9	\$3.0	\$3.2	\$3.3

NATURAL GAS INTER. TECHNICAL INDICATOR

RSI(14)	SELL
STOCH(9,6)	SELL
STOCHRSI(14)	SELL
MACD(12,26)	SELL
ADX(14)	SELL
Williams %R	SELL
CCI(14)	SELL
Highs/Lows(14)	BUY
Ultimate Oscillator	SELL
ROC	SELL
BUY	1
SELL	9
NEUTRAL	0
SUMMARY	STRONG BEARISH



204 Amardarshan Building 3rd floor Saket Nagar , Indore-452018

Call: 0731-4797170-173 **Mob:** +91-9303172345 / **Toll Free:** 18001030059 / **SMS:** <INDIRA> to 56070

DISCLAIMER

This report is for private circulation within the Indira Group. This report is strictly confidential and for information of the selected recipient only and may not be altered in any way, transmitted to, copied or distributed, in part or in whole, to any other person or to the media or reproduced in any form. This report should not be construed as an offer or solicitation to buy or sell any securities or any interest in securities. It does not constitute a personal recommendation or take into account the particular investment objectives, financial situations, or any such factor. The information, opinions, estimates and forecasts contained here have been obtained from, or are based upon, sources we believe to be reliable, but no representation of warranty, express or implied, is made by us to their accuracy or completeness. Opinions expressed are our current opinions as of our current opinions as of the data appearing on this material only and are subject to change without notice.